

# Forefront program on GLOCAL civil engineering leaders for co-development of Asia and Japan

This program is for **doctoral course students** to develop **GLOCAL Civil Engineering Leaders** who will lead the sustainable co-development of Japan and Asian countries by building high-quality infrastructure that is finely adapted to the regional characteristics of Asian countries in response to rapidly changing global environmental and disaster prevention issues. **Japanese government (MEXT) scholarship is awarded to some of the students.**

Jointly organized by:

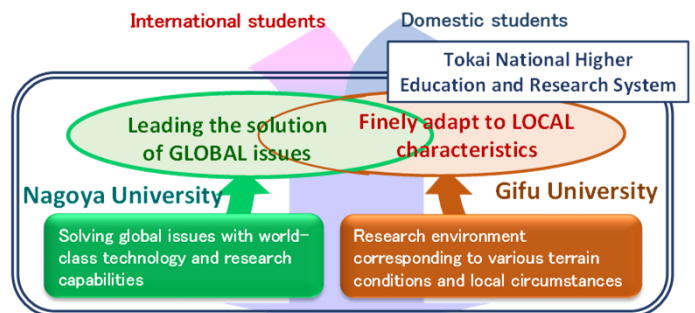
- Departments of **Civil and Environmental Engineering**, Graduate School of Engineering, **NAGOYA UNIVERSITY**
- Department of **Environmental Engineering and Architecture** (Group of Sustainable Development), Graduate School Environmental Studies, **NAGOYA UNIVERSITY**
- Department of **Engineering Science**, Graduate School of Engineering, **GIFU UNIVERSITY**

## Feature of the program:

In April 2020, Nagoya University and Gifu University were integrated into one national university corporation, "Tokai National Higher Education and Research System (THERS)." This program is the **first joint international program** established by taking advantages of the features of these two universities.

**Nagoya University:** leading-edge technologies and research capabilities to solve global disaster prevention and environmental issues

**Gifu University:** an excellent ability to implement outstanding technologies to local areas in collaboration with the area to solve the issues



## GLOCAL Civil Engineering Leader for Sustainable Co-development of Asia and Japan

- Active as an international leader in both global and local expansion to build a sustainable infrastructure
- Contributing to the achievement of the Sustainable Development Goals (SDGs)

## Joint activities by two universities

1. Joint guidance with multiple academic advisers from both universities
2. Joint lectures/seminars
3. International seminars and study tours
4. Research internship
5. Seminars by alumni

## Admission

### MEXT scholarship

Applicants for enrollment of October 2023 need to submit the documents by early December 2022.

The list of necessary documents will be available in our website.

### Prospective students with other scholarships or self-funded

PhD students who enrolled to our departments by general admission procedures are also eligible to enroll our program. For the admission procedure of each university, visit the university websites via our sites.



## Contact address

Civil Engineering Joint  
International Program Office  
fso@civil.nagoya-u.ac.jp



<https://www.civil.nagoya-u.ac.jp/forefront/>